



FN S N

Following a B.Sc. degree in L
L at Nanjing University of
Information Science and Technology (NUIST, 2009-
2013), China, I turned to the research of Space
Weather and focus on magnetic field modelling, led
by Prof. Yong Jiang, at NUIST, China (2013-2020).

After taking three years to get S.M degree in Space
Weather at Nanjing (2013-2016), I got a PhD. Joint
Training Program at University of Liverpool (UK,
2016-2019), worked with Professor Richard Holme.
Train in the methods of global magnetic field
modeling and the use of satellite geomagnetic data,
especially for issues related to long-term changes in
lithosphere and geomagnetic fields. Research on
geomagnetic crustal field based on SWARM satellite
data and Chinese aeromagnetic data.

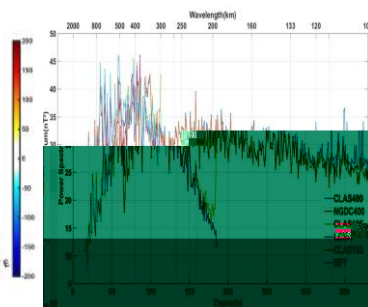
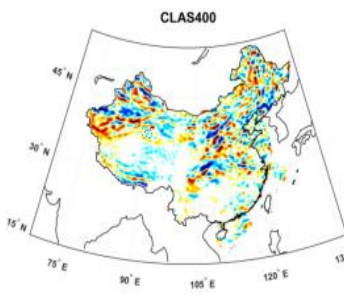
In 2020, I got Ph.D degree in NUIST and the next
year, I was offered a position as research assistant at
Macao University of Science and Technology (China).

From 2022, I accepted a post-doctoral position at
at the State Key Laboratory in Macao (China),
affiliated with the Chinese Space Admin. and I have
been researching Martian lithosphere magnetic field. I
also joined the ongoing Macao Science Satellite
project.

C
W



C SF NL S C S S
L SF NL S C S S
C L SF L S C CL SF L S S S



L W

W S N

N ijh M T ij ij ij tti h
h ij h ij C ij h ij h ij h
N ijh ij tti ij ij ij ij ij h
h h C ij
ij hN ij h ij ij th ij ij l
th h ij ij h h C ij
ij h ij h h h ij ij h ij
CN ij h ij hij l ij th h ij

N N

l tti ij ijhj l ij ij ij h
l tti ij ijhj l ij N S S S
tti ij tti ijjh tti ijjh G ij
tti ij tti ijjh tti ijjh G ij N

S

C S

