



SHORT BIO

Following a B.Eng. degree in Safety Engineering at Beijing Institute of Technology (BIT, 2014), China, I was offered a PhD project in Mechanics, at BIT, China.

In 2021 I was offered a position as an assistant professor at the State Key Laboratory of Lunar and Planetary Science in Macau University of Science and Technology (MUST), Macau, China. I operate and maintain the impact loading facilities of the laboratory, and research on impact dynamics for planetary craters.

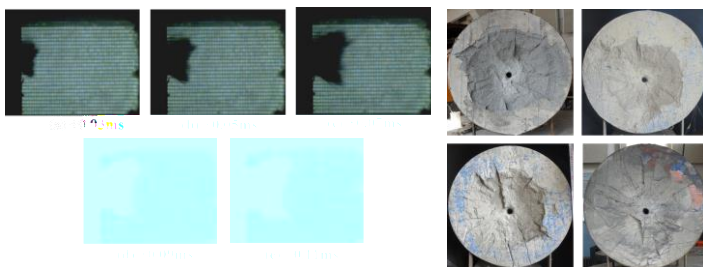
Asst. Prof.

Yang-Yu Lu



PhD: Mechanics Beijing Institute of Technology, China

B.Eng. : Mechanics Engineering Beijing Institute of Technology, China



Lu, Y., et al., 2021

KEY PUBLICATIONS ()

Lu, Y , et al., 2021.

International Journal of Impact Engineering

Lu, Y , et al., 2020.

L M

Applied Sciences.

Lu, Y , et al., 2020.

Applied Sciences.

PROFESSIONAL EXPERIENCE

L M

M M

GRANTS

