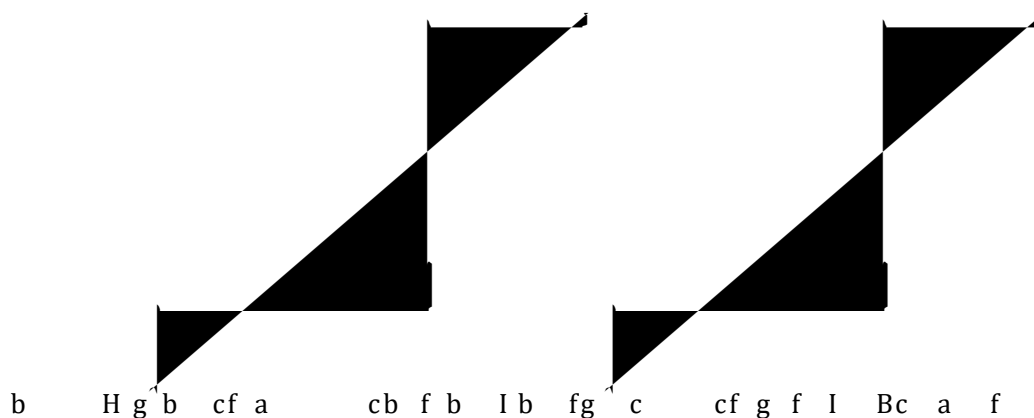




:

2013	2018	Ph.D. / Education / University of Sheffield ( <i>The Impact of Formative Motivation and Achievement</i> )
2012	2013	Master / Applied Linguistics with TESOL / University of Sheffield ( <i>The Use of Formative Assessment in Chinese Primary Schools</i> )
2008	2012	Bachelor / Teaching English to Young Learners / Nanjing Xiaozhuang University ( <i>The Relationship Between Coping Strategies and School Adaptation among Young Learners</i> )
2021	Present	Assistant Professor / UIC / Macau University of Science and Technology
2021	2021	Course tutor / Centre for English Language Education/ University of Nottingham Ningbo China
2019	– 2020	English Language tutor / Language Centre / University of Leeds
2017	– 2019	Teaching Assistant / School of Education / University of Sheffield
2013	2020	Part-time Language Tutor / Confucius Institute / University of Sheffield



H

b b b f b

c f b b b b

C c f

b b c b

g

c f c c f g c

c c c c c c c c

c b c f c b b g

b f b c b c b b H

c f b G g b c

c f b f

a c

g f f f

g g a

c b g c a

g c b g f g

H a d c c f a

g g g a b b f b

f f b b